



SAMAGRA

Holistic Development Service Centre.



Introduction

SAMAGRA (Holistic Development Service Centre) is a non-profit organization of Nepal whose long term vision centers around a self-reliant, development oriented and dynamic society, ensuring human rights to every individual. To that end, SAMAGRA's promoters had successfully experimented its holistic development approach in Jhadeba, VDC (where majority of the people consist of Dalits, Janajatis including other poorest vulnerable people) in Palpa district as far back as in 1985, at the time when the whole concept/practice of NGO was quite new in Nepal. The approach aimed at political and socio-economic empowerment of the target people for their self-reliant all-round development through the formation and empowerment of "Social Families (SFs)" organized amongst the rural communities under the supervision/ inspiration of SAMAGRA field level staff, who, with the help of professionals, impart with relevant need-based skills, knowledge and information to the concerned people.

In May 10, 1996, SAMAGRA was registered in Kathmandu District Administration office and affiliated to Social Welfare Council. Now it has six "District Social Families" registered in six respective districts: Udayapur, Siraha, Saptari, Dhading, Gorkha and Lamjung and has district office along with regular staff and part time volunteers in each of these and other 9 working districts. At present Samagra covers 20 districts with focus in 13: Nine in Terai and 4 in hills.

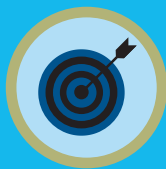


Our Guiding Principals



VISION

A self reliant, development oriented and dynamic society, ensuring human rights to every individual.



MISSION

Empower the marginalized and the “absolute poor” people, through the promotion of social, economic and human capital adopting good governance.



GOAL

To empower the excluded/marginalized people including Dalits, Adibasi-Janajatis, Madhesis, women and others so that they will be enjoying their rights and are securing better livelihoods with dignity in an environment of peace.



Activities/ Project

1. PROJECT TITLE

Empowerment of Marginalized people for Peace Building and Democratic Development

Donor: Governance Facility (an initiative of the embassies of Denmark and Switzerland, and the UK's Department for International Development (DFID) set up in agreement with the Government of Nepal)

Program Coverage: Sunsari, Saptari, Siraha, Udayapur, Dhanusa, Mahottari, Gorkha, Dhading, Lamjung, Sarlahi, Rautahat, Bara and Kathmandu

Expected outcome of project

- i. Marginalized people are empowered with improved understanding of, and exercise, their roles, rights and responsibilities in wider democratic processes and are able to access public resources.
- ii. Local level state agencies are supported to make them more responsive to the rights of marginalized people.
- iii. Communities are better able to promote social harmony and peace along with respect of human rights.

Activities

Formation and mobilization of Social Family, capacity building of Social Family, Training on basic human rights,/conflict transformation,/participatory planning,/ leadership development and group management/ account keeping, Awareness activities related to services from state agencies, Facilitation to channelize resources for livelihood enhancement & infrastructure development activities, Public hearing/Punic Audit/ Social Audit, Interaction with political parties, community elders, civil society representatives about governance & accountability issues, Facilitation for participatory planning and resource mapping, advocacy for seeking resources, Mobilization of revolving fund, Seminars / workshops for orienting/empowering state's agencies, Local and national level advocacy activities, Human rights promotion, monitoring and sensitization activities, In-country experience-sharing, exposure / exchange visits of Social Family, Facilitation for local level peace building, Events aimed for promoting peace and harmony and organizational communication

Poverty Alleviation Program

2. PROJECT TITLE

Partner Organisation: Poverty Alleviation Fund

Program Coverage: Dhading (Thakre and GangaJamuna rural municipality)

Project's objectives

Long term objective:

Enable dalit, janajati, marginalized and vulnerable community groups below poverty line to gain access to resources for their productive self-employment, encourage them to undertake income generating activities for their economic, social and political empowerment.

Short term objective:

- i. Empowerment of community organization which will increase reach to local resources, services and opportunities resulting in sustainable livelihood from use of these resources
- ii. Skill and capacity development of dalit, janajati, woman, differently able people, wpoor community for their social and economic empowerment
- iii. Local rural infrastructure development, maintenance, enhancement of quality of these infrastructures and help in environment conservation

Activities

Formation /mobilization of Social Family (Community Organisation), registration of community organization in Poverty Alleviation Fund, Training on leadership development and group management, Training on enhancement of micro enterprise business/ Agriculture and livestock farming, Preparation of project, Agreement with Poverty Alleviation Fund, Sub- projects on income generation and infrastructure development, Services on technology and social mobilization, Monitoring, Collaboration and partnership with concerned offices, Monthly saving and mobilization of revolving fund.



3. PROJECT TITLE

Local Governance and Community Development Program (LGCDP)

Program Coverage

Lamjung (Dordi rural municipality and Besishahar municipality) and Kathmandu Metropolitan City (in 9 wards)

Objectives

- i. To implement method and model of Social Mobilization Act 2071 for carrying out local governance and community development program
- ii. Capacity building of social mobilizers and concerned party of wards to effectively implement social mobilization programs
- iii. To help in enhancing the quality and effectiveness of social mobilization programs
- iv. To monitor the quality of social mobilization programs and accomplished activities and help in increasing the reach
- v. To provide suggestions and feedback to local level agencies for social mobilization

Activities

- i. Mobilization of ward citizen forum and citizen awareness center
- ii. Facilitation in participatory planning process
- iii. Facilitation to minimize social problems and ill practices
- iv. Facilitation for easy access of local services
- v. Provide necessary help to social mobilizers as on when needed



4. Regular Activities

SAMAGRA carries out following activities on a regular basis mobilizing its internal resources and volunteers.

- i. Volunteer group formation, empowerment and mobilization (For social family formation and mobilization)
- ii. Training on social mobilization, regular saving mobilization/ revolving fund mobilization, social mapping, participatory planning, conflict transformation, basic human rights promotion and protection , cooperative management, leadership development and necessary facilitation and consultation as and when required
- iii. National level advocacy program on burning social issues
- iv. Learning Centres for: Social Family, local development, conflict transformation and harmony, social mobilization, participatory planning , cooperative management, basic human rights, leadership development



5. Collaboration in local level

- i. Informal class in collaboration with local education office
- ii. Preparation of local development strategy plan in collaboration with concerned rural/ urban municipality/municipality/districts
- iii. Research works
- iv. Different short spanned project design in collaboration with local state agencies.

SAMAGRA's grass roots level partners/ networks mobilized through Regional offices, district office and junior motivators

- 1028 Social Families and 511 IGGs (being converted to SFs) with more than 50000 HHs
- 42 Cooperatives (9 Women cooperatives)
- 6 District Social Families (registered in concerned districts)

Some examples of key- achievements from program/ project carried out by organisation

Advocacy to fulfill human rights and campaign against violation

- More than 40000 individuals obtained citizenship certificates
- More than 10000 dalit/janajati children enrolled in schools and got scholarships
- More than 50000 personal/vital events registered
- Empowered SFs, tapped and mobilized the resources from various local level state and non-state agencies. The ratio of empowerment cost to the resources obtained by them is 1:7.
- Change of attitude/ response of duty bearers towards general people and service delivery
- 1000 cases of actions taken/monitoring (in addition to regular monitoring within SFs at the local level)

Political empowerment of marginalized people

- 1 dalit woman- the member of SF and other 5 women indirectly benefiting from SAMAGRA's program were elected/nominated as CA members
- More than 1200 social family members have evolved as local level leaders
- More than 80 SF members elected in recent local level election

Conflict transformation and peace building at local level

- Training to 1039 persons and 205 conflict transformation trainers in SF levels
- 895 cases of conflicts resolved at SF level
- Exposure visits of Terai and hills SFs promoting cohesion/ harmony between Madhesi and Pahade
- More than 25357 HHs of more than 1,000 SFs are practicing social harmony/ cohesion, helping as peace agents.

Organizational development and Local resource mobilization

- 42 cooperatives formed/ trained and mobilizing local resources
- Central revolving fund of Rs 10 millions and local revolving fund of Rs 40 millions- have been mobilized in SFs/ IGGs.

Livelihood enhancement

- More than 2000 people (25% women) trained and 60% of them employed

Rural Infrastructure and Environment Conservation

- 92 km of mule trails constructed in northern Gorkha based on labour intensive and green road concept
- 47 km of green road constructed in Gorkha
- 135 drinking water schemes, 37 school buildings, 45 community buildings, 3 micro hydro, 7 suspension bridges, etc
- Community forests, tree plantation, flood protection





Research and published resources

- i. Research on condition of pre-primary school in collaboration with Kathmandu Metropolitan
- ii. Effects of microfinance institutes and cooperatives on socio-economic condition of marginalized people: Research
- iii. People at Margin: Book
- iv. Handbook: Sarbajanik Sewa ra Subhidha Sambandhi Jankari
- v. One for all, all for One: Report
- vi. Power to the people: Report



Social Family (SF)

Social Families are cohesive and inclusive community groups of poorest/marginalized and excluded communities, comprising largely Dalits and indigenous nationalities, engaged in all round empowerment activities aiming at collective betterment of the group members. Unlike the traditional “groups” formed by various government human rights / development agencies and NGOs, which tend to focus on specific and micro thematic development areas such as livestock , vegetable production, irrigation, forest, good governance, human rights, etc., ignoring or undermining other aspects of life. The members of social families, like extended family members in a particular municipality ward, are emotionally attached to one other and share one-others’ joys and sorrows. **Social families** work together to address multiple dimensions of day-to-day-life and function as socio-economic capital in the respective communities. The SFs are based on, and function as a trust, where every member is a trustee. Thus SFs act as a unique entity (both target and medium) in the grass-roots level to protect /claim/exercise all the three types of human rights.

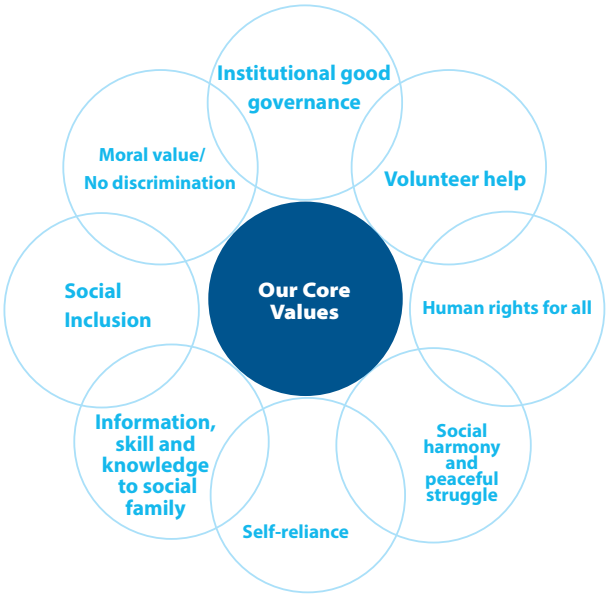
There will be one “**District Social Family**” registered in each district which will be launching empowerment/ development activities within the districts independently through SFs in the rural / urban Municipality wards. The district SFs are affiliated to **SAMAGRA** and institutionalized to adhere to SAMAGRA’s philosophy and methodology of overall empowerment/ development. **SAMAGRA** has also adopted cooperative movement as one of the components of its campaign. All the SFs in each VDC form and run a cooperative or get affiliated with the existing cooperative which will help them strengthen SF’s concept of cooperation within the community. They will act as a legally registered local financial institution for mobilizing local financial resources and will help SF members meet their enhanced individual financial need.

Diversity/ Inclusiveness in organization

	In GA	In the Board	Staff
Women	18	7	67
Dalit	11	3	18
Adhibasi Janajati	14	4	42
Madhesi	12	2	15
Brahmin- Chhetri/ Dasnami	18	2	29
Differently able	1	-	2
Total	43	9	104



Our Core Values



Index:

Blue: Already covered
Orange: Already covered (more focused)

Executive Committee

President: Er. Babu Kaji Adhikari

Vice-President: Rupa Bishwakarma

General Secretary: Anita Pariyar

Treasurer: Kanchan Negi Lama

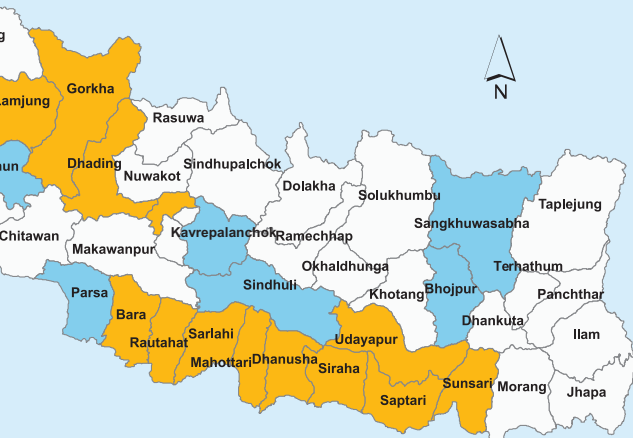
Secretary: Chhewang Gyalchen Lama

Board Members: Chameli Pradhan, Dharma Kumari Paudel, Shyamo Kumari Tatmini, Sita Kumari Chaudhari.

Advisory Committee

1. Biharikrishna Shrestha
2. Balkrishna Lal Joshi
3. Durga Datta Ghimire
4. Krishna Murari Bhandari
5. Kanchan Lama
6. Dr. Laxman Pd. Gyawali
7. Laxman Acharya

Program Covered Districts





Holistic Development Service Centre
(SAMAGRA Bikas Sewa Kendra)
Hospital Road, Chabahil,
G. P.O. Box – 13278, Kathmandu,
Tel: +977-1-4469649
Fax: +977-1-4469649
Email: info@samagra-nepal.org.np
Web: www.samagra-nepal.org.np